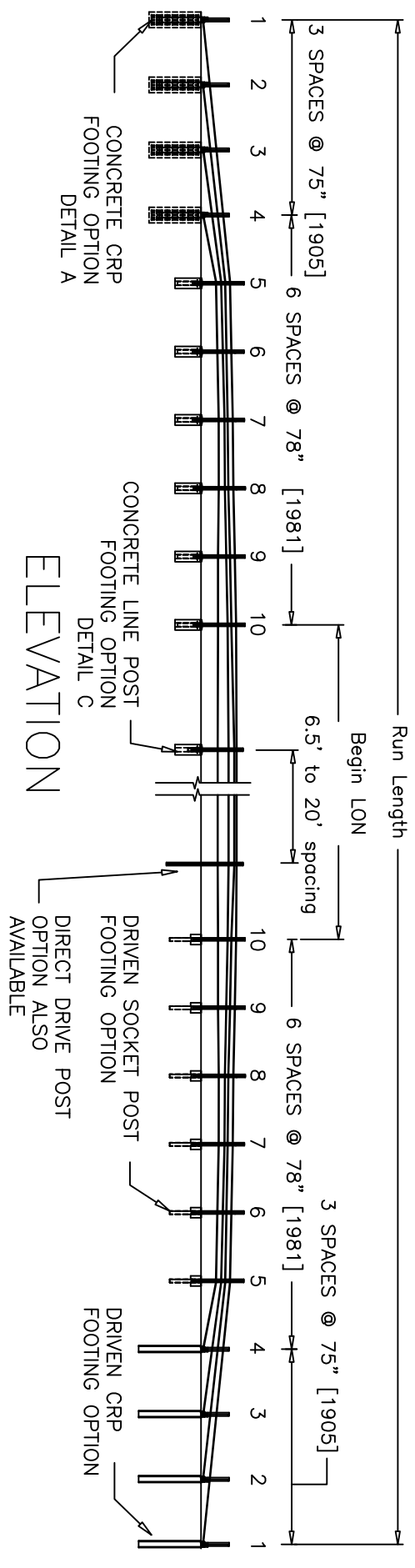


PLAN

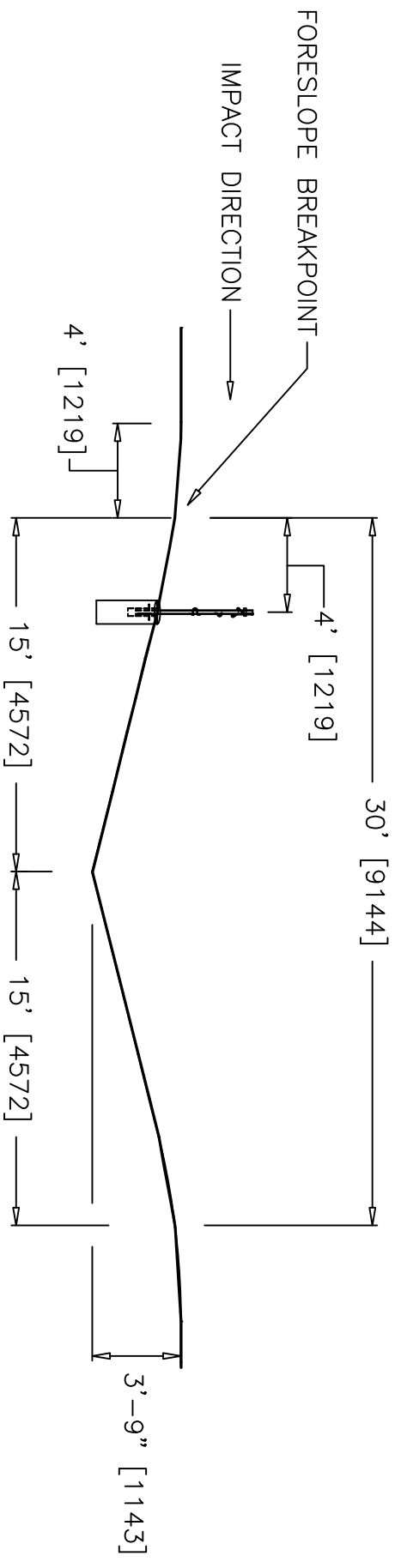
Can be place at edge of roadway



ELEVATION

NU-CABLE™ - TL-3 4:1 SYSTEM

Revisions			Project No.			Date			Scale		
No.	Date	By	CK.	400001	May 6, 2008	RM					
1.	7/17/08	CH		Nucor Steel Marion Inc 912 Cheney Ave, Marion OH 43302			WITH CRP ANCHOR			Sheet No. 1 of 14	
2.	7/28/09	CH									
3.	10/1/09	CH									
4.	5/23/11	CH									
5.											

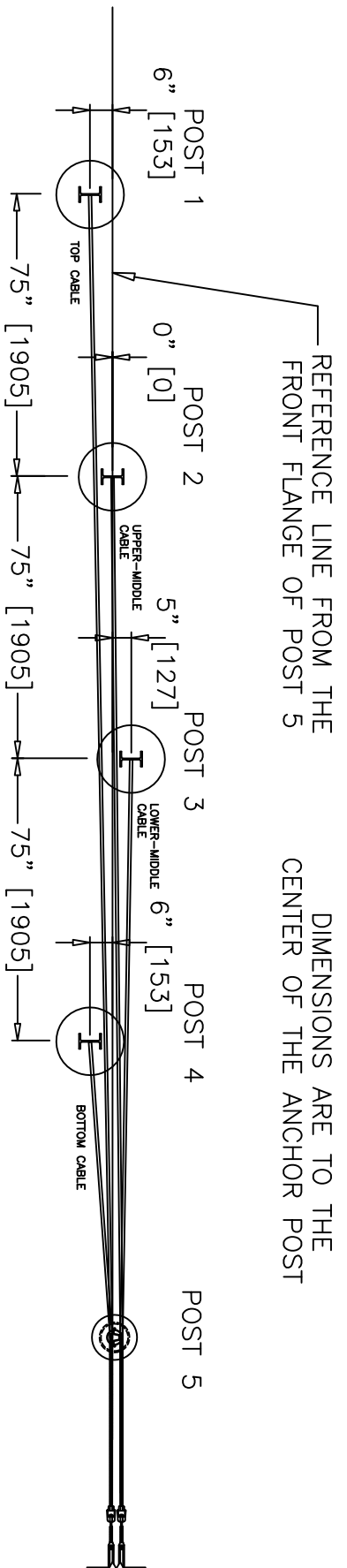


Designed for 4:1 Slope or Flatter

Placement within area 1ft left or right of the center line of the ditch bottom or minimum 8ft from centerline of ditch bottom up the slope to road edge
 (DO NOT PLACE IN AREA 1ft to 8ft UP EITHER SIDE OF CENTER OF DITCH BOTTOM)

NU-CABLE™ - TL-3 4:1 SYSTEM

Revisions			Nucor Steel Marion Inc 912 Cheney Ave, Marion OH 43302				
No.	Date	By	CK.	Project No.	Date	Drawn By	Scale
1.	7/17/08	CH		400001	2008/03/06	AWC	
2.	7/28/09	CH		WITH CRP ANCHOR			
3.	10/1/09	CH					
4.	5/23/11	CH					
5.				Sheet No. 2 of 14			

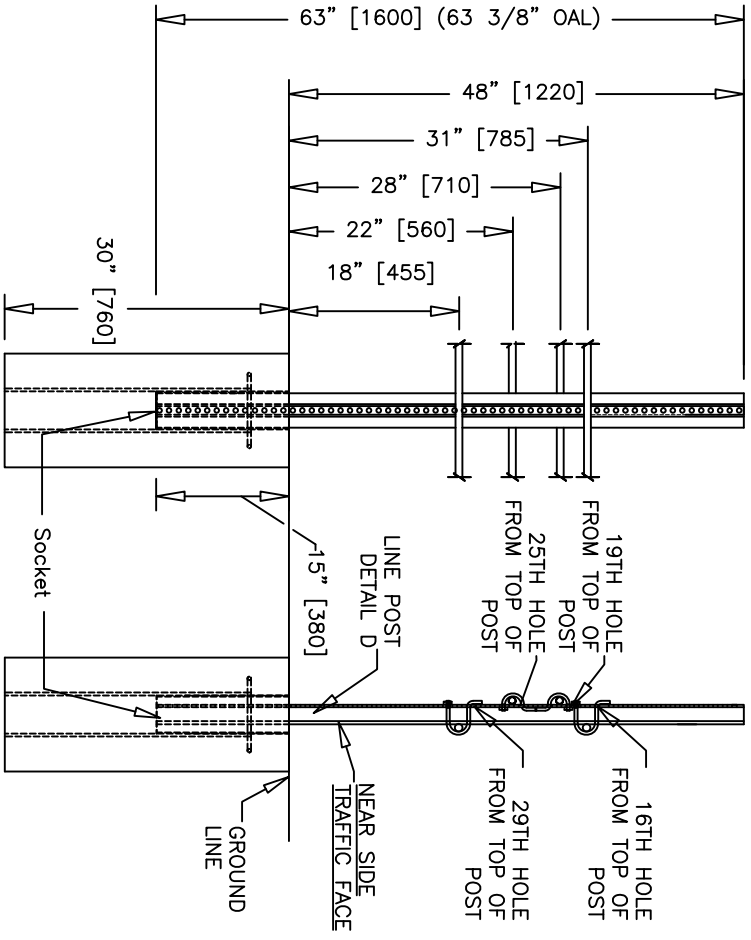


CRP IN CONCRETE FOOTING POST POSITIONS

NU-CABLE™ - TL-3 4:1 SYSTEM

Revisions		Nucor Steel Marion Inc	
No.	Date	By	CK.
1.	7/17/08	CH	
2.	7/28/09	CH	
3.	10/1/09	CH	
4.	5/23/11	CH	
5.			

Project No.		Date		Drawn By		Scale	
400001		2008/03/06		AWC			
WITH CRP ANCHOR				Sheet No.			
				3 of 14			



TERMINAL POST 5

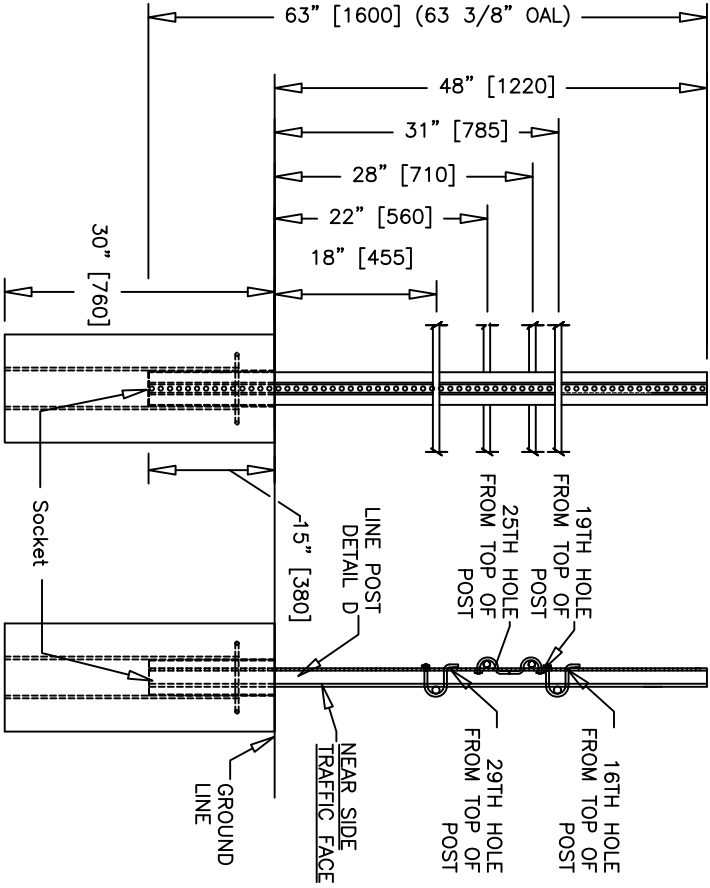
NOTE: CABLE HEIGHTS ARE TO THE MIDDLE OF THE CABLE.

NU-CABLE™ - TL-3 4:1 SYSTEM

Revisions		Project No.		Date		Drawn By		Scale	
No.	Date	By	CK.	Project No.	Date	Drawn By	Scale	Sheet No.	Scale
1.	7/17/08	CH		400001	2008/03/06	AWC		4	1/4
2.	7/28/09	CH							
3.	10/1/09	CH							
4.	5/23/11	CH							
5.									

Nucor Steel Marion Inc
912 Cheney Ave, Marion OH 43302

WITH CRP ANCHOR



TERMINAL POST 6

NOTE: CABLE HEIGHTS ARE TO THE MIDDLE OF THE CABLE.

NU-CABLE™ - TL-3 4:1 SYSTEM

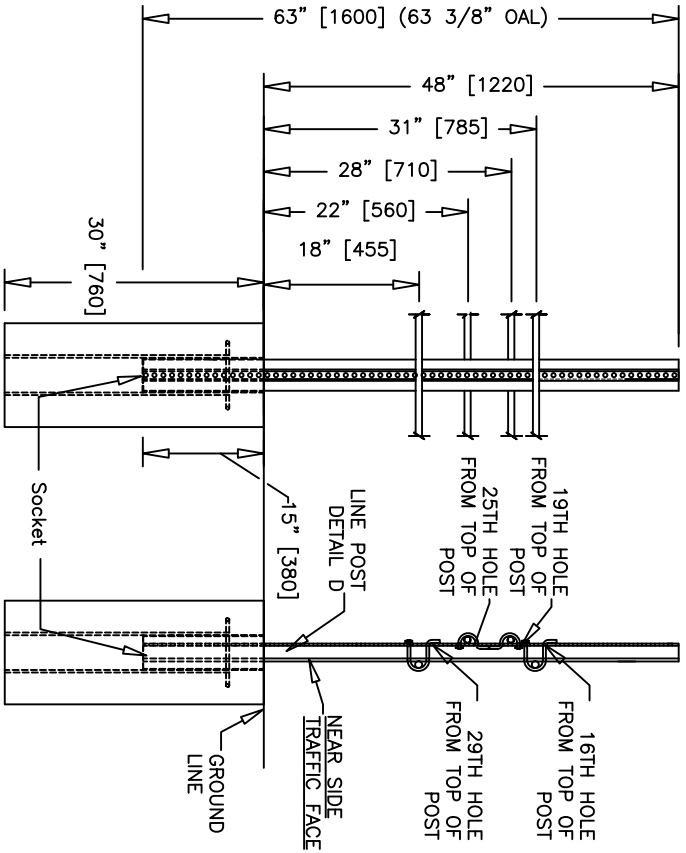
Revisions

No.	Date	By	CHK.	Project No.	Date	Drawn By	Scale
1.	7/17/08	CH		400001	2008/03/06	AWC	
2.	7/28/09	CH					
3.	10/1/09	CH					
4.	5/23/11	CH					
5.							

Nucor Steel Marion Inc
912 Cheney Ave, Marion OH 43302

WITH CRP ANCHOR

Sheet No.
5 of 14



TERMINAL POST 7

NOTE: CABLE HEIGHTS ARE TO THE MIDDLE OF THE CABLE.

NU-CABLE™ - TL-3 4:1 SYSTEM

Revisions

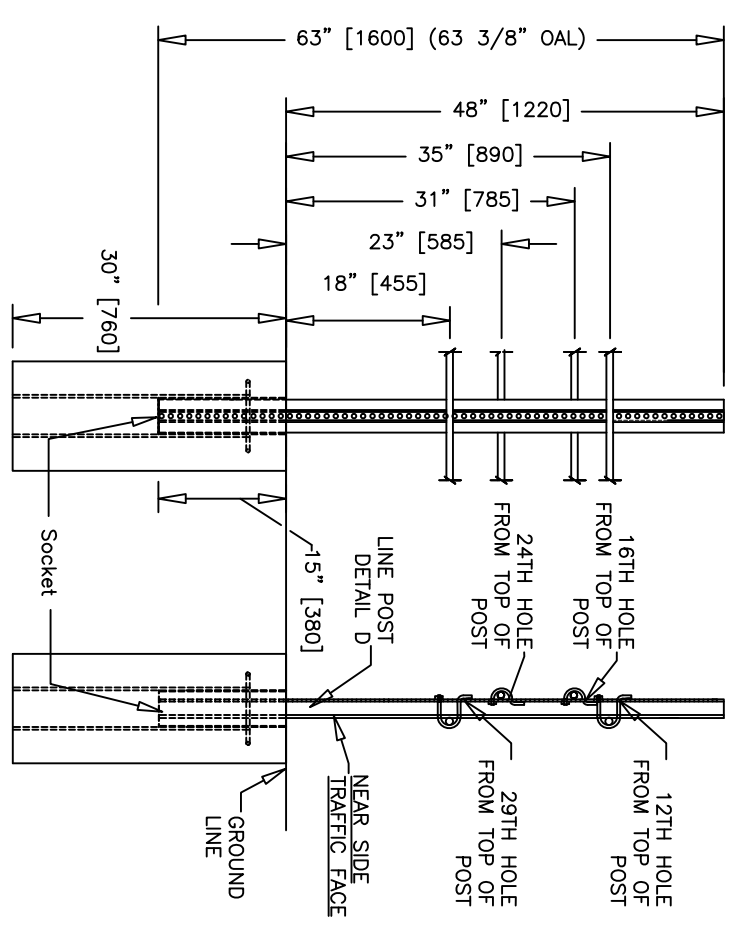
No.	Date	By	CK.
1.	7/17/08	CH	
2.	7/28/09	CH	
3.	10/1/09	CH	
4.	5/23/11	CH	
5.			

Nucor Steel Marion Inc
912 Cheney Ave, Marion OH 43302

Project No. 400001 Date 2008/03/06 Drawn By AWC Scale

WITH CRP ANCHOR

Sheet No. 6 of 14

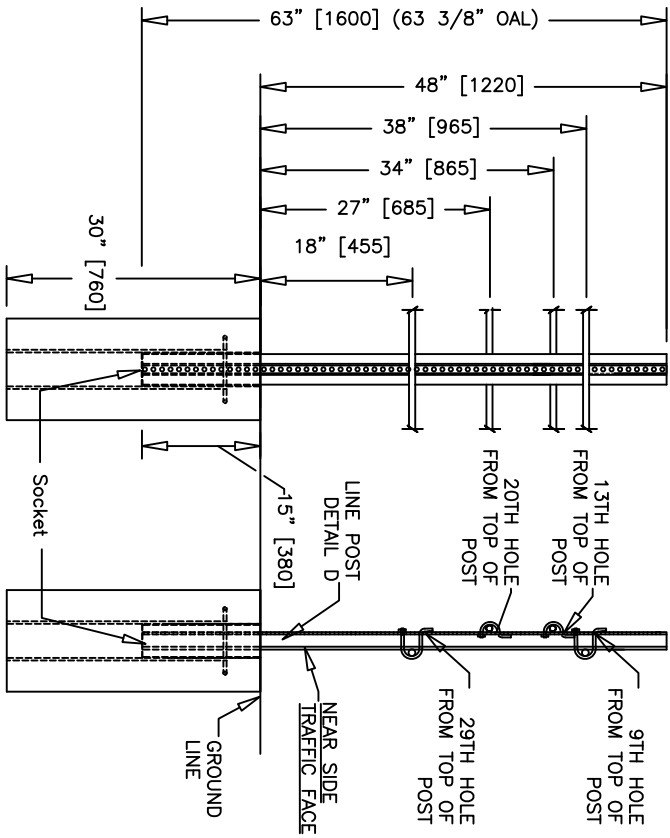


TERMINAL POST 8

NOTE: CABLE HEIGHTS ARE TO THE MIDDLE OF THE CABLE.

NU-CABLE™ - TL-3 4:1 SYSTEM			
Revisions			
No.	Date	By	CK.
1.	7/17/08	CH	
2.	7/28/09	CH	
3.	10/1/09	CH	
4.	7/23/11	CH	
5.			

Nucor Steel Marion Inc			
912 Cheney Ave, Marion OH 43302			
Project No.	Date	Drawn By	Scale
400001	2008/03/06	AWC	
WITH CRP ANCHOR			Sheet No.
			7 of 14



TERMINAL POST 9

NOTE: CABLE HEIGHTS ARE TO THE MIDDLE OF THE CABLE.

NU-CABLE™ - TL-3 4:1 SYSTEM

Revisions

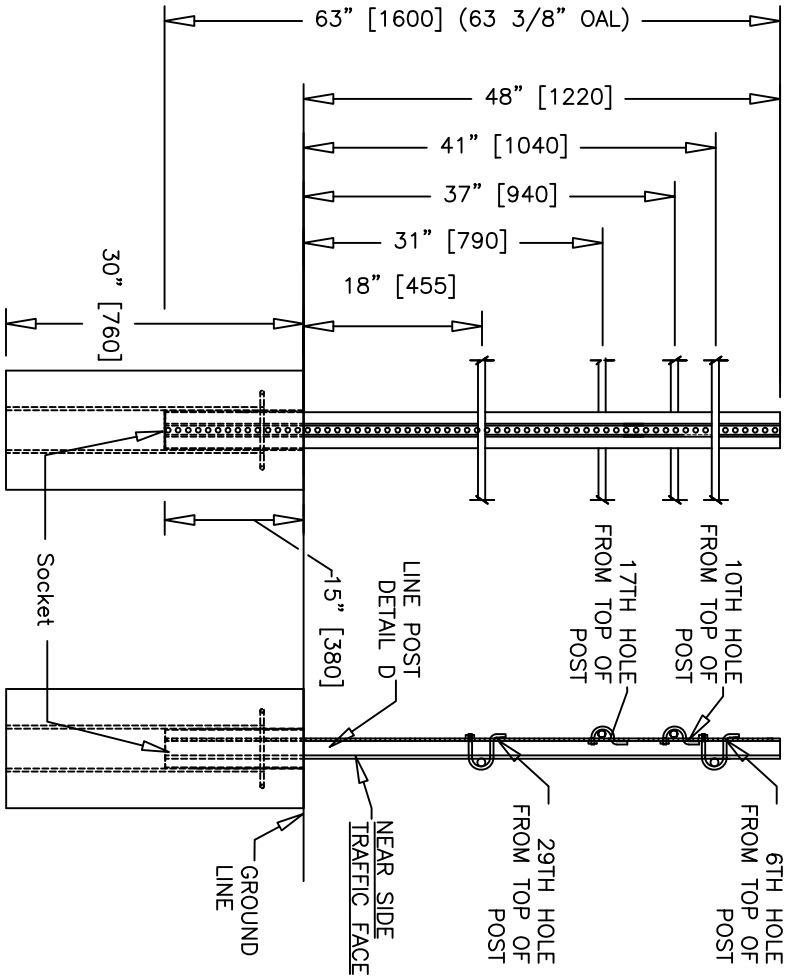
No.	Date	By	CK.
1.	7/17/08	CH	
2.	7/28/09	CH	
3.	10/1/09	CH	
4.	5/23/11	CH	
5.			

Nucor Steel Marion Inc
912 Cheney Ave, Marion OH 43302

Project No. 400001 Date 2008/03/06 Drawn By AWC Scale

WITH CRP ANCHOR

Sheet No. 8 of 14



TERMINAL POST 10

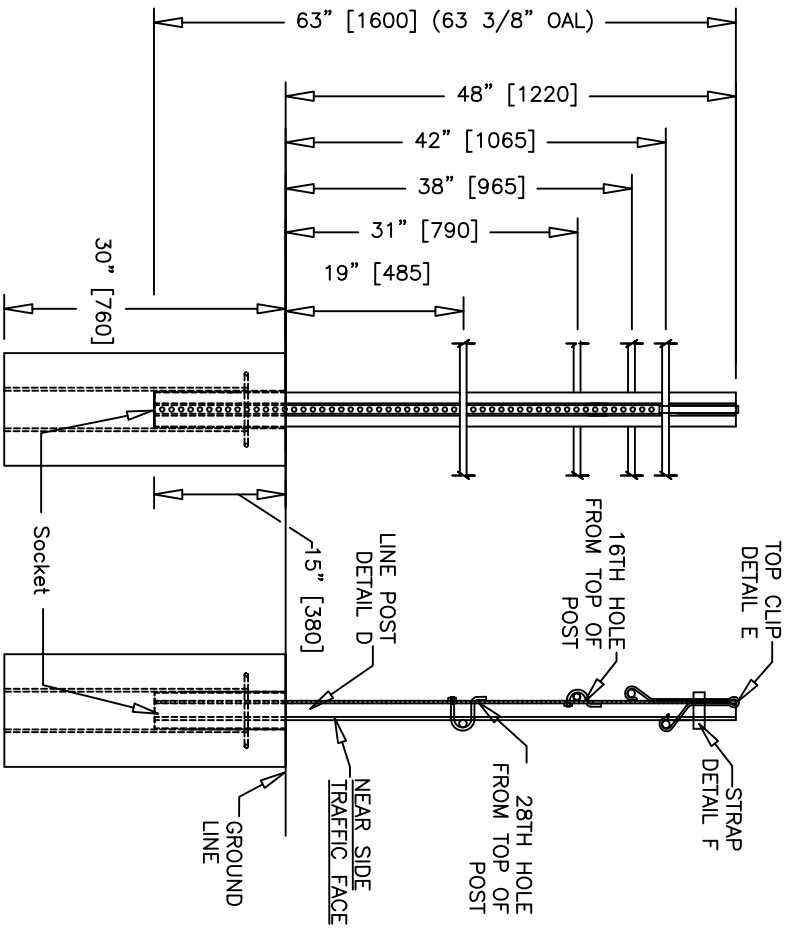
NOTE: CABLE HEIGHTS ARE TO THE MIDDLE OF THE CABLE.

NU-CABLE™ - TL-3 4:1 SYSTEM

Revisions			Nucor Steel Marion Inc				
No.	Date	By	CK.	Project No.	Date	Drawn By	Scale
1.	7/17/08	CH		912 Cheney Ave, Marion OH 43302			
2.	7/28/09	CH		400001	2008/03/06	AWC	
3.	10/1/09	CH					
4.	5/23/11	CH					
5.							

WITH CRP ANCHOR

Sheet No.
9 of 14

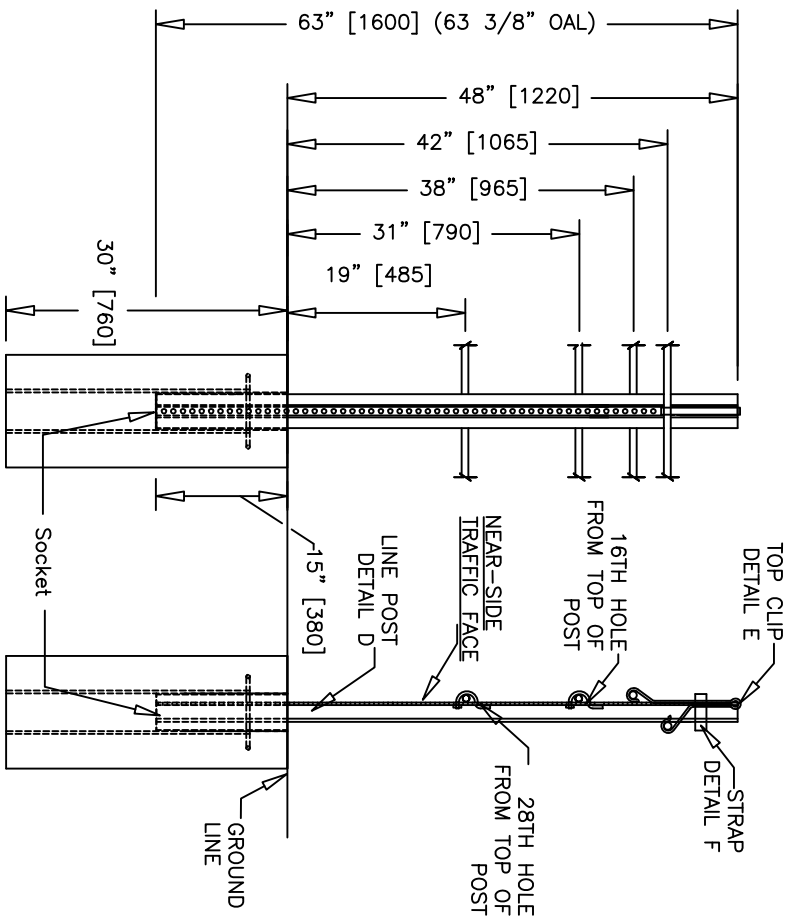
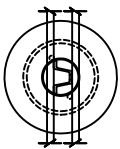


LENGTH OF NEED POSTS MEDIAN CONFIGURATION

NOTE: CABLE HEIGHTS ARE TO THE MIDDLE
OF THE CABLE.

NU-CABLE™ - TL-3 4:1 SYSTEM			
Revisions			
No.	Date	By	CK.
1.	7/17/08	CH	
2.	7/28/09	CH	
3.	10/1/09	CH	
4.	5/23/11	CH	
5.			
Project No.		Date	
400001		2008/03/06	
Drawn By		Scale	
AWC		AWC	
WITH CRP ANCHOR			Sheet No.
10 of 14			4

Nucor Steel Marion Inc
912 Cheney Ave, Marion OH 43302



LENGTH OF NEED POSTS ROADSIDE CONFIGURATION

NOTE: CABLE HEIGHTS ARE TO THE MIDDLE
OF THE CABLE.

NU-CABLE™ - TL-3 4:1 SYSTEM

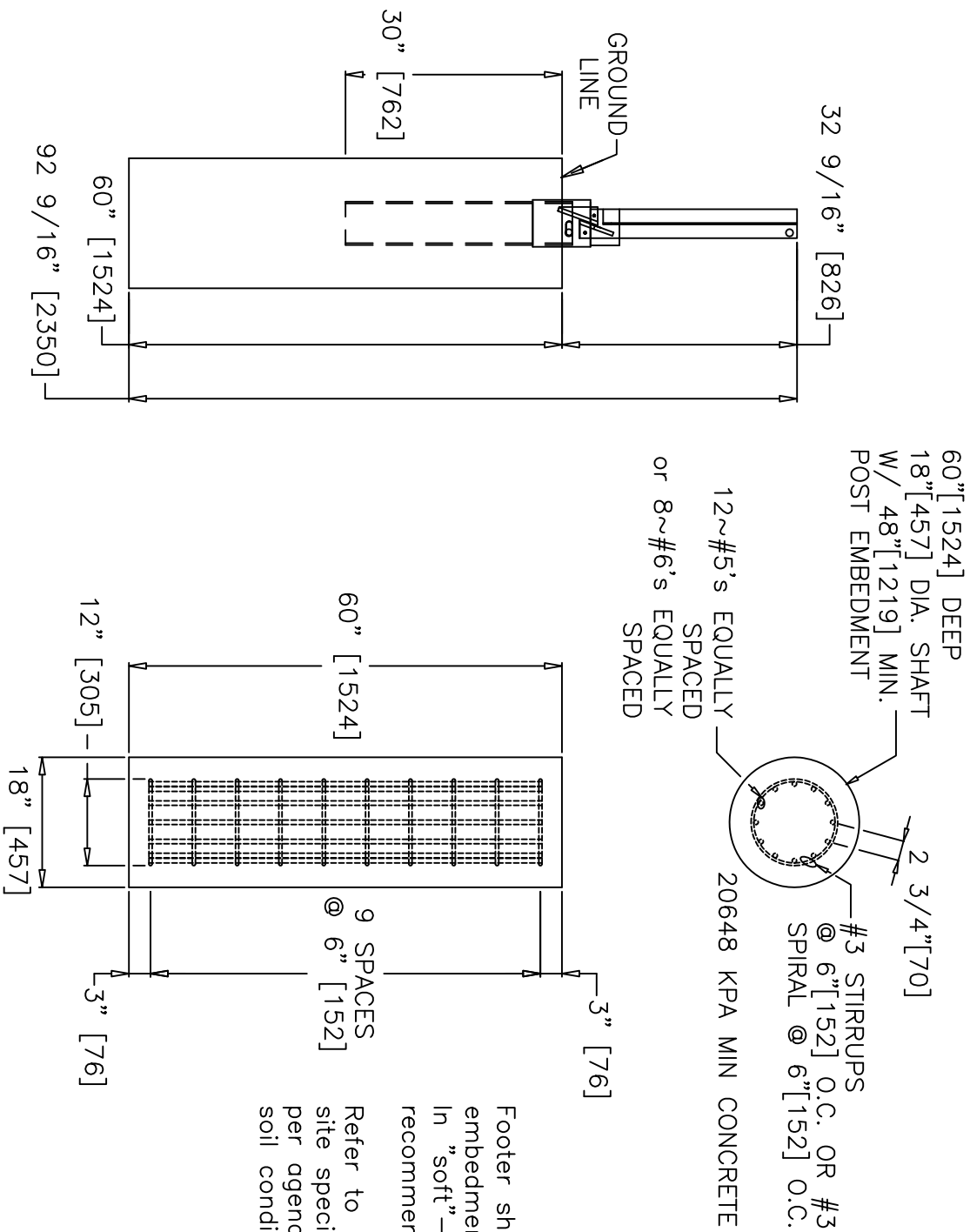
Revisions

No.	Date	By	CK.	Project No.	Date	Drawn By	Scale
1.	7/17/08	CH		400001	2008/03/06	AWC	
2.	7/28/09	CH					
3.	10/1/09	CH					
4.	5/23/11	CH					
5.							

Nucor Steel Marion Inc
912 Cheney Ave, Marion OH 43302

WITH CRP ANCHOR

Sheet No.
10 of 14



Footer shown with typical embedment depth of 5' 0" [1524]. In "soft" soil conditions, recommended depth of 8' 0" [2438].

Refer to project plans for site specific footer requirements, per agency specifications and soil conditions.

DETAIL A

CRP IN CONCRETE FOOTING

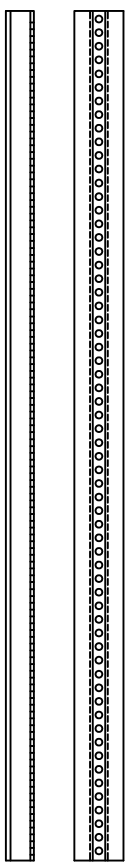
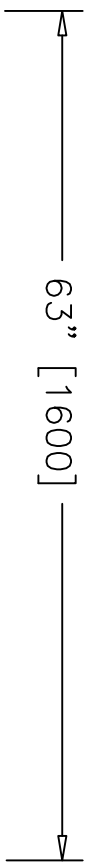
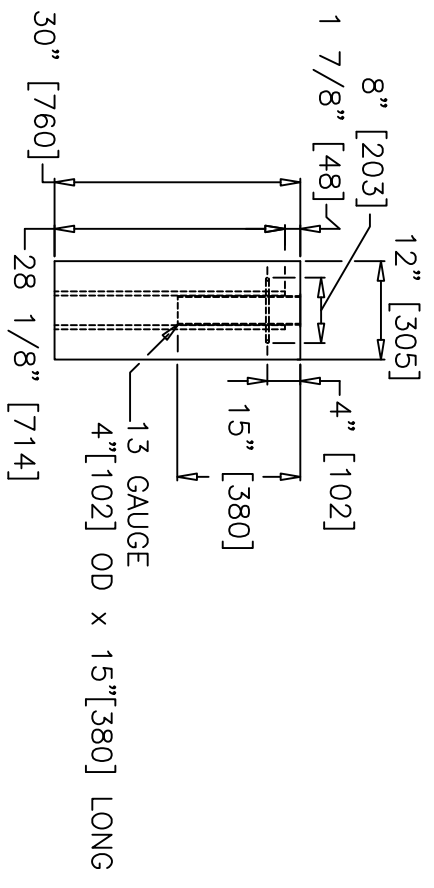
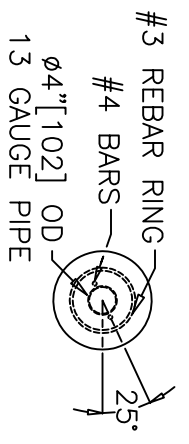
(POSTS 1-4)

Revisions			
No.	Date	By	CK.
1.	7/17/08	CH	
2.	7/28/09	CH	
3.	10/1/09	CH	
4.	5/23/11	CH	
5.			

NU-CABLE™ - TL-3 4:1 SYSTEM			
Nucor Steel Marion Inc			
912 Cheney Ave, Marion OH 43302			
Project No.	Date	Drawn By	Scale
400001	2008/03/06	AWC	
WITH CRP ANCHOR			Sheet No.
			12 of 14

Footer shown with typical
embedment depth of 2' 6" [762].

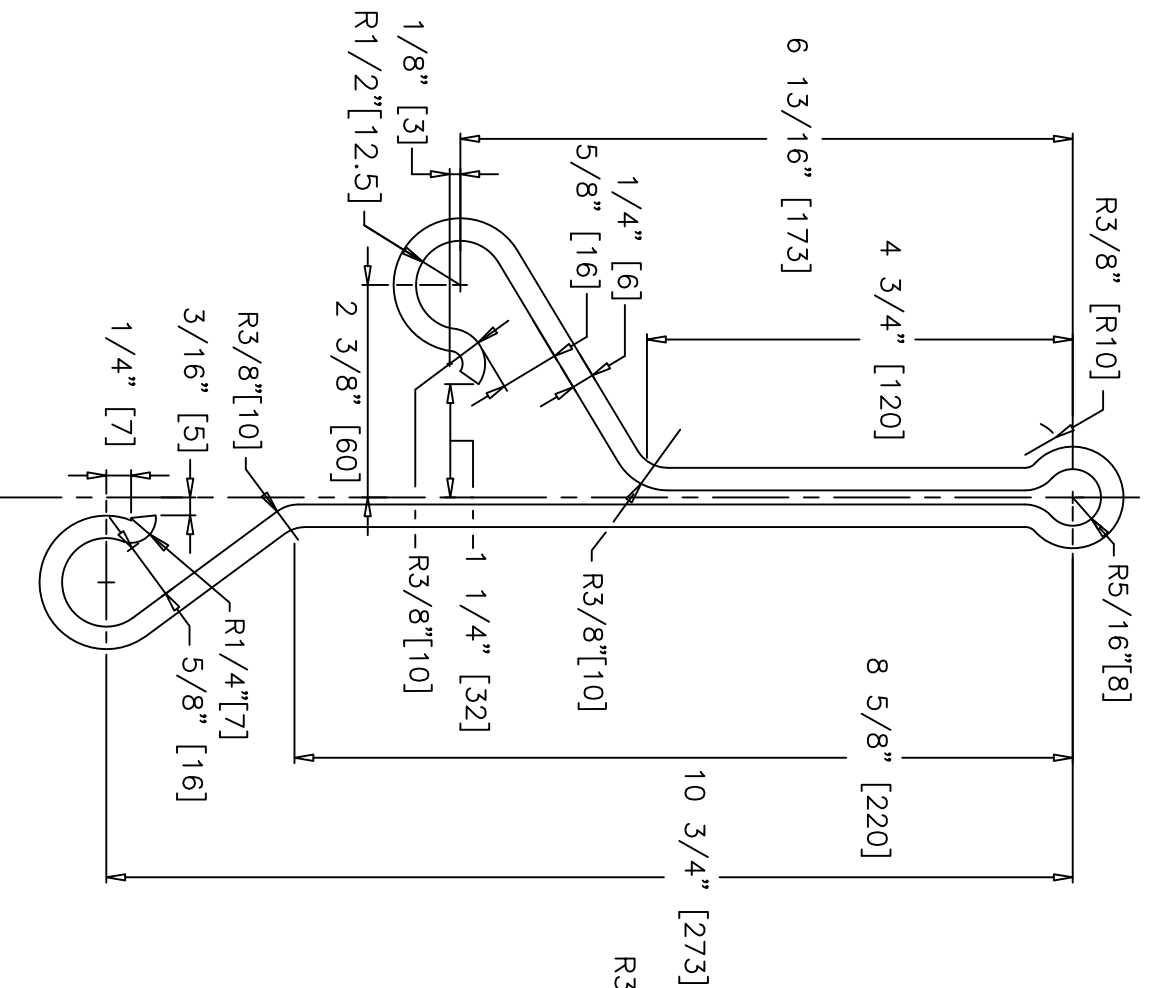
Refer to project plans for
site specific footer requirements,
per agency specifications and
soil conditions.



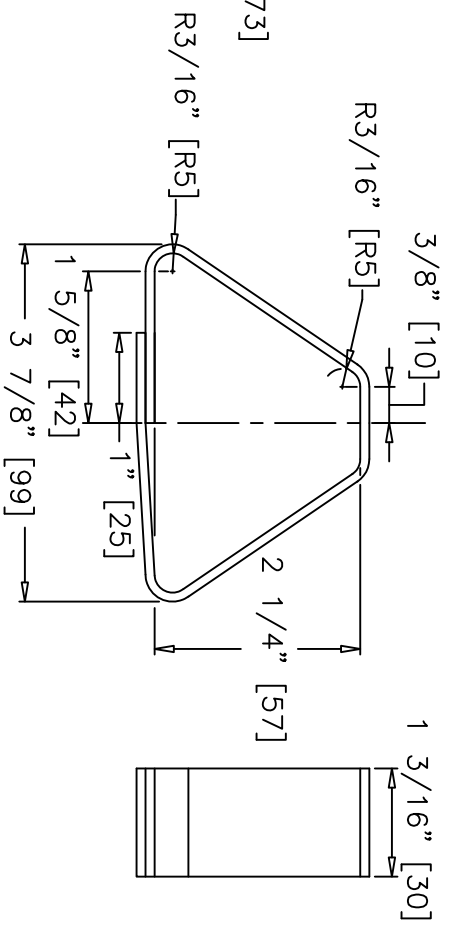
DETAIL C
LINE POST FOOTING

DETAIL D
FLANGED CHANNEL CHANNEL POST

Revisions				NU-CABLE™ - TL-3 4:1 SYSTEM			
No.	Date	By	CK.	Nucor Steel Marion Inc 912 Cheney Ave, Marion OH 43302			
1.	7/17/08	CH		Project No.	Date	Drawn By	Scale
2.	7/28/09	CH		400001	2008/03/06	AWC	
3.	10/1/09	CH		WITH CRP ANCHOR			
4.	5/23/11	CH					
5.							
				Sheet No.	13 of 14		



DETAIL E
1/4" x 3/4" TOP CLIP



DETAIL F
STAINLESS STRAP

NU-CABLE™ - TL-3 4:1 SYSTEM

Revisions			Nucor Steel Marion Inc 912 Cheney Ave, Marion OH 43302				
No.	Date	By	CK.	Project No.	Date	Drawn By	Scale
1.	7/17/08	CH		4000001	2008/03/06	AWC	
2.	7/28/09	CH					
3.	10/1/09	CH					
4.	5/23/11	CH					
5.							

WITH CRP ANCHOR

Sheet No. 14 of 4