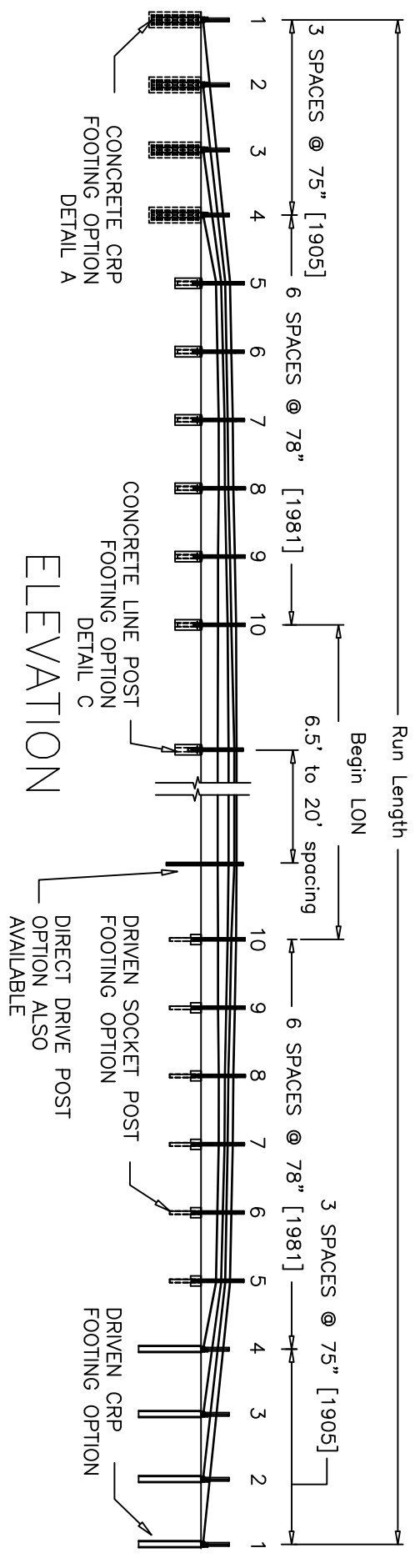


PLAN

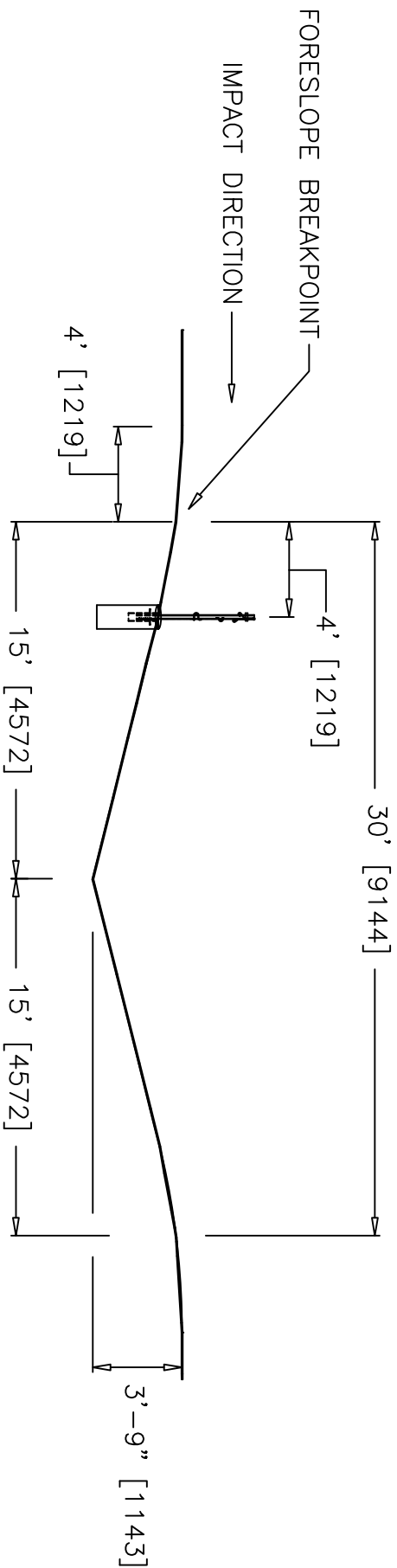
Can be place at edge of roadway



ELEVATION

NU-CABLE™ - TL-3 FOUR CABLE SYSTEM

Revisions			Project No.			Date			Scale		
No.	Date	By	CK.	400001	May 6, 2008	RM					
1.	7/17/08	CH		Nucor Steel Marion Inc 912 Cheney Ave, Marion OH 43302			WITH CRP ANCHOR			Sheet No. 1 of 13	
2.	7/28/09	CH									
3.	10/1/09	CH									
4.	5/23/11	CH									
5.											



# Designed for 6:1 Slope or Flatter

Placement within area 1ft left or right of the center line of the ditch bottom or minimum 8ft from centerline of ditch bottom up the slope to road edge (DO NOT PLACE IN AREA 1ft to 8ft UP EITHER SIDE OF CENTER OF DITCH BOTTOM)

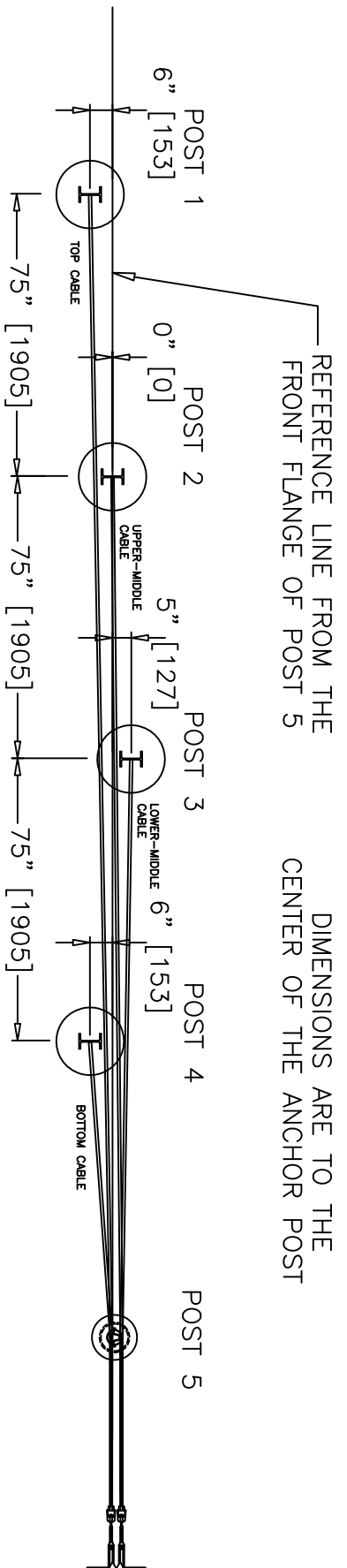
## NU-CABLE™ - TL-3 FOUR CABLE SYSTEM

Revisions			Nucor Steel Marion Inc	
No.	Date	By	CK.	Project No.
1.	7/17/08	CH		400001
2.	7/28/09	CH		2008/03/06
3.	10/1/09	CH		
4.	5/23/11	CH		
5.				

912 Cheney Ave, Marion OH 43302

Date: 2008/03/06  
 Drawn By: AWC

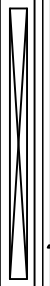
WITH CRP ANCHOR  
 Sheet No. 2 of 13



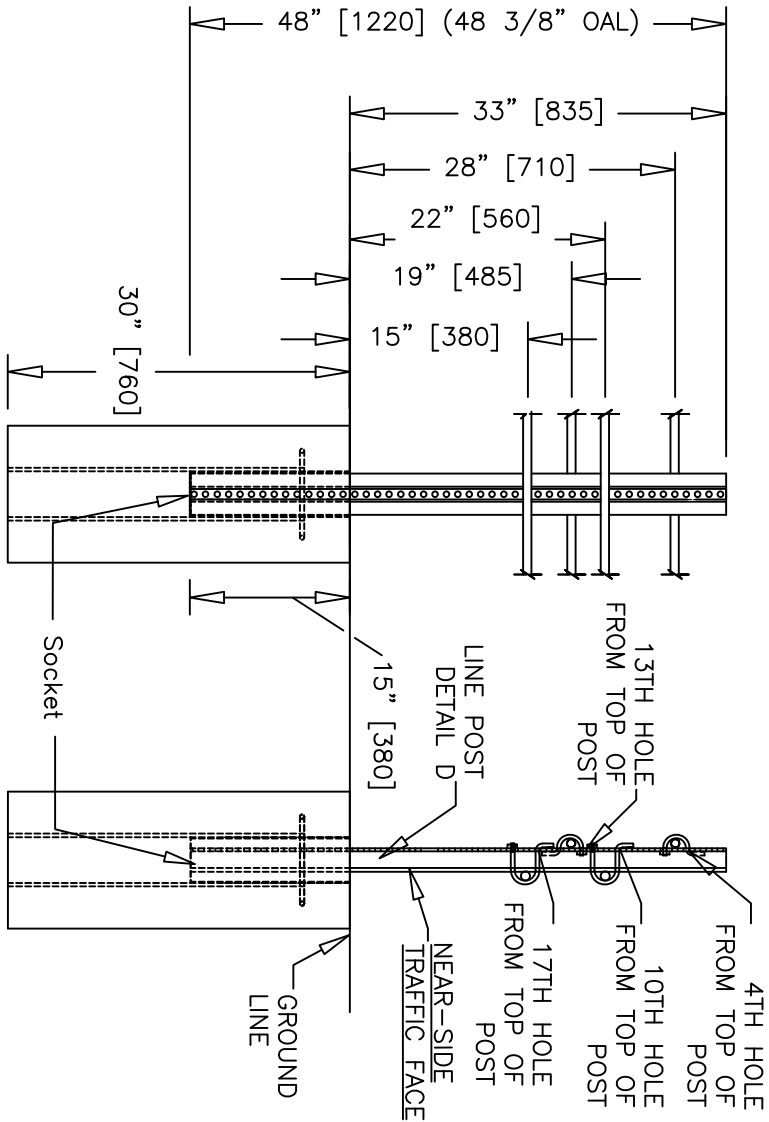
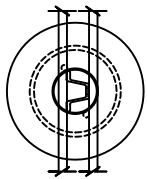
# CRP IN CONCRETE FOOTING POST POSITIONS

## NU-CABLE™ - TL-3 FOUR CABLE SYSTEM

Revisions			Nucor Steel Marion Inc				
No.	Date	By	CK.	Project No.	Date	Drawn By	Scale
1.	7/17/08	CH		400001	2008/03/06	AWC	
2.	7/28/09	CH		WITH CRP ANCHOR			
3.	10/1/09	CH		Sheet No.			
4.	5/23/11	CH		3 of 13			
5.							







# TERMINAL POST 6

NOTE: CABLE HEIGHTS ARE TO THE MIDDLE OF THE CABLE.

## NU-CABLE™ - TL-3 FOUR CABLE SYSTEM

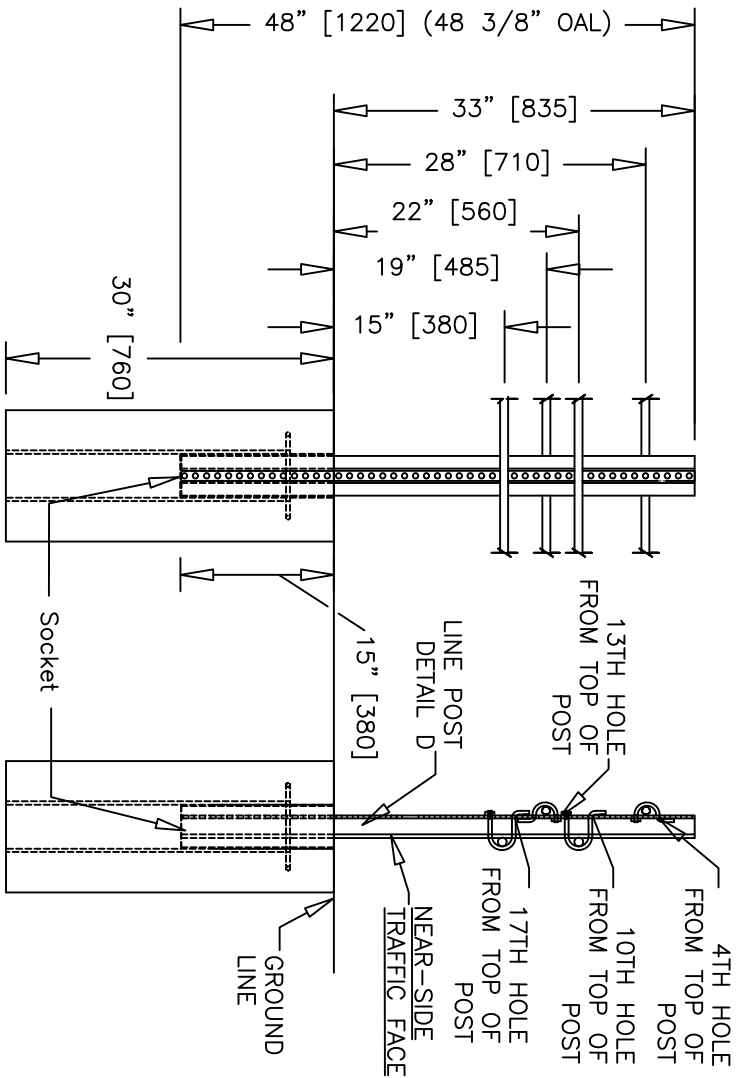
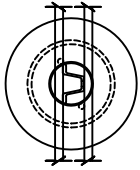
### Revisions

No.	Date	By	CK.	Project No.	Date	Drawn By	Scale
1.	7/17/08	CH		400001	2008/03/06	AWC	
2.	7/28/09	CH					
3.	10/1/09	CH					
4.	5/23/11	CH					
5.							

Nucor Steel Marion Inc  
912 Cheney Ave, Marion OH 43302

WITH CRP ANCHOR

Sheet No.  
5 of 13



# TERMINAL POST 7

NOTE: CABLE HEIGHTS ARE TO THE MIDDLE OF THE CABLE.

## NU-CABLE™ - TL-3 FOUR CABLE SYSTEM

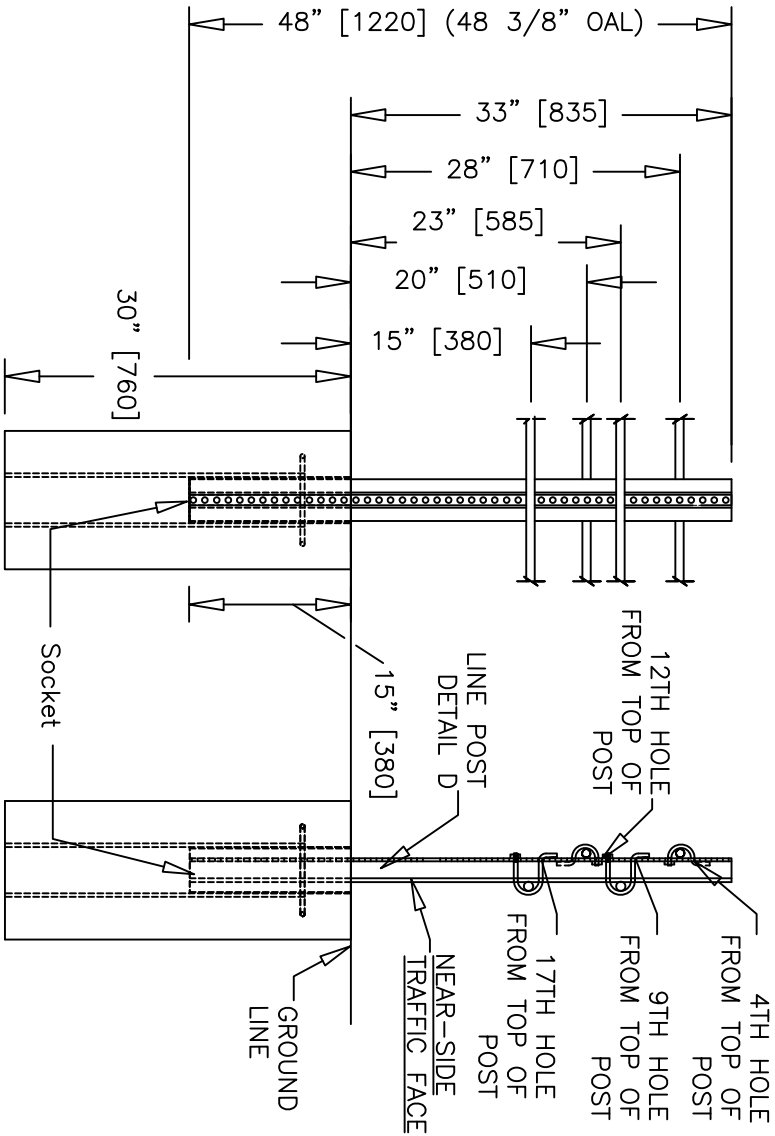
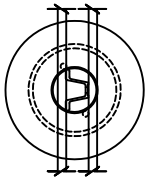
### Revisions

No.	Date	By	CK.	Project No.	Date	Drawn By	Scale
1.	7/17/08	CH		400001	2008/03/06	AWC	Scale
2.	7/28/09	CH					
3.	10/1/09	CH					
4.	5/23/11	CH					
5.							

Nucor Steel Marion Inc  
912 Cheney Ave, Marion OH 43302

WITH CRP ANCHOR

Sheet No.  
6 of 13



# TERMINAL POST 8

NOTE: CABLE HEIGHTS ARE TO THE MIDDLE OF THE CABLE.

## NU-CABLE™ - TL-3 FOUR CABLE SYSTEM

### Revisions

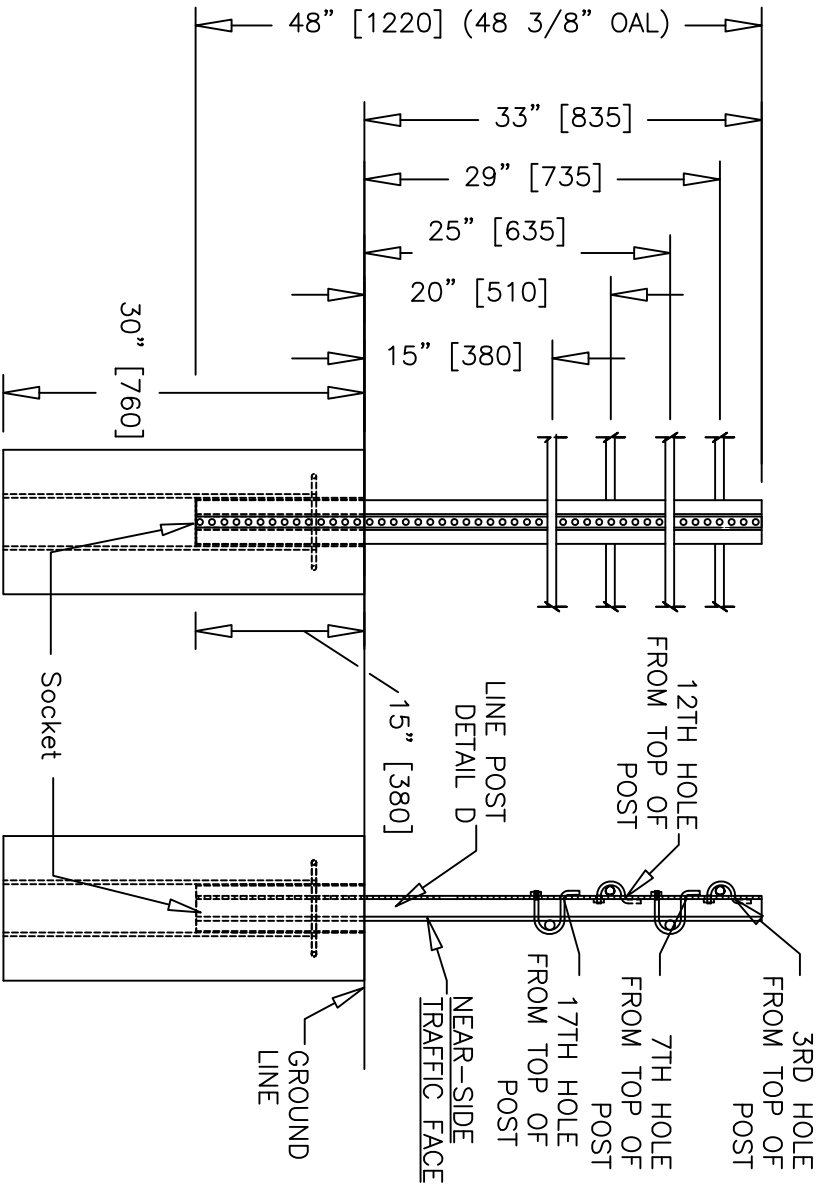
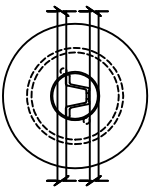
No.	Date	By	CK.
1.	7/17/08	CH	
2.	7/28/09	CH	
3.	10/1/09	CH	
4.	5/23/11	CH	
5.			

Nucor Steel Marion Inc  
912 Cheney Ave, Marion OH 43302

Project No.	Date	Drawn By	Scale
400001	2008/03/06	AWC	

WITH CRP ANCHOR

Sheet No.  
7 of 13



# TERMINAL POST 9

NOTE: CABLE HEIGHTS ARE TO THE MIDDLE OF THE CABLE.

## NU-CABLE™ - TL-3 FOUR CABLE SYSTEM

### Revisions

No.	Date	By	CHK.	Project No.	Date	Drawn By	Scale
1.	7/17/08	CH		912 Cheney Ave, Marion OH 43302			
2.	7/28/09	CH		400001	2008/03/06	AWC	
3.	10/1/09	CH					
4.	5/23/11	CH					
5.							

Nucor Steel Marion Inc

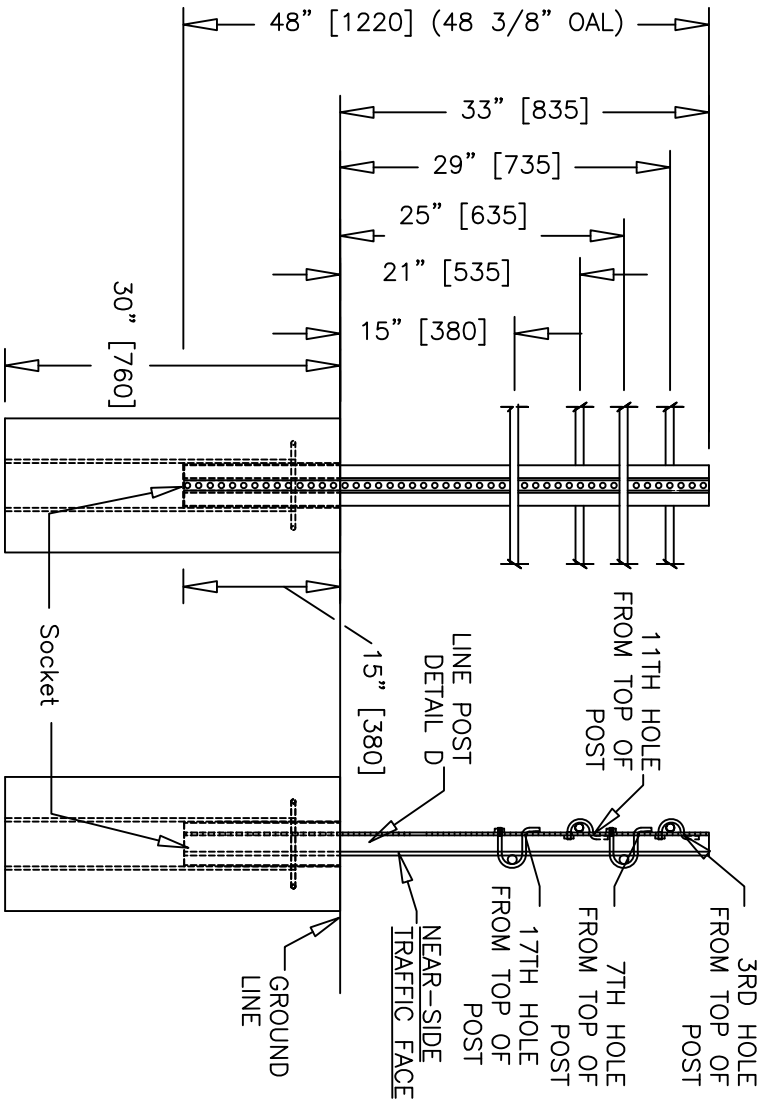
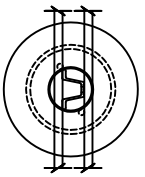
912 Cheney Ave, Marion OH 43302

400001 2008/03/06 AWC

WITH CRP ANCHOR

Sheet No. 8 of 13





# TERMINAL POST 10

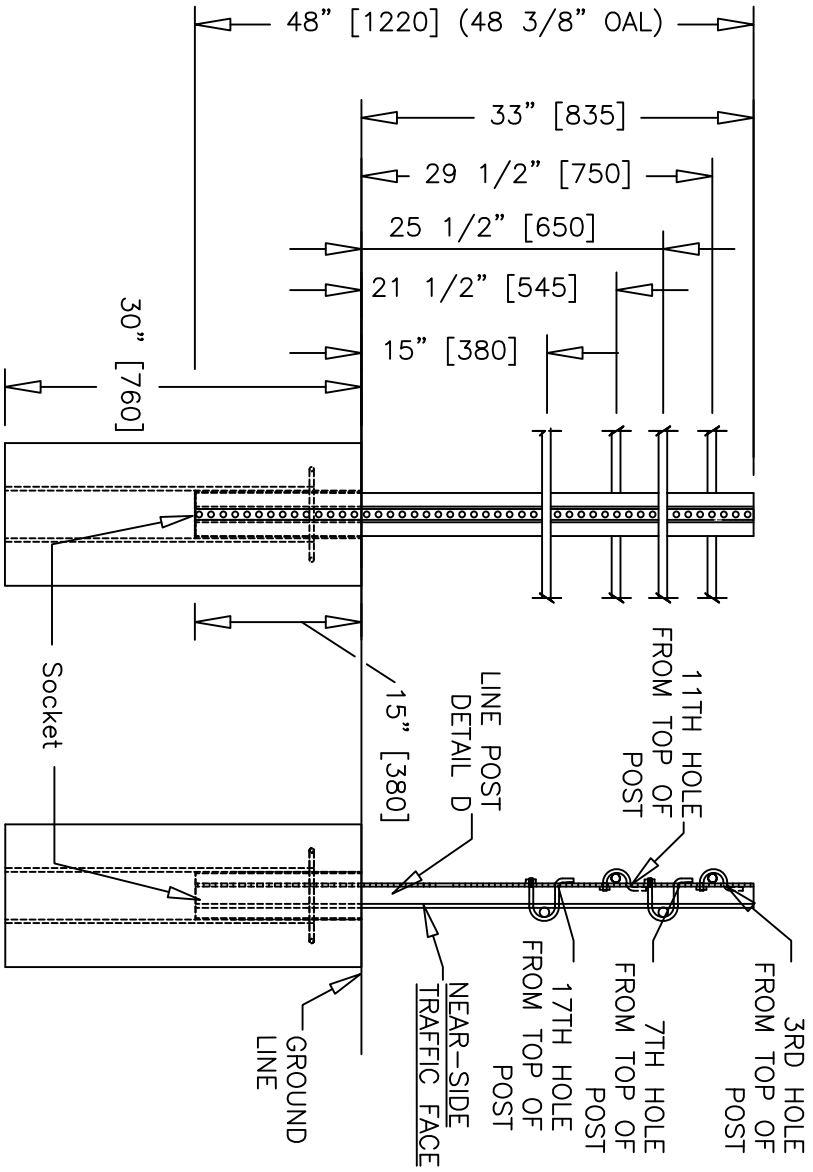
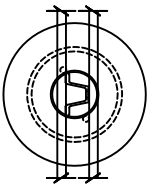
NOTE: CABLE HEIGHTS ARE TO THE MIDDLE OF THE CABLE.

## NU-CABLE™ - TL-3 FOUR CABLE SYSTEM

Revisions			Nucor Steel Marion Inc				
No.	Date	By	CK.	Project No.	Date	Drawn By	Scale
1.	7/17/08	CH		912 Cheney Ave, Marion OH 43302			
2.	7/28/09	CH		400001	2008/03/06	AWC	
3.	10/1/09	CH					
4.	5/23/11	CH					
5.							

WITH CRP ANCHOR

Sheet No. 9 of 13

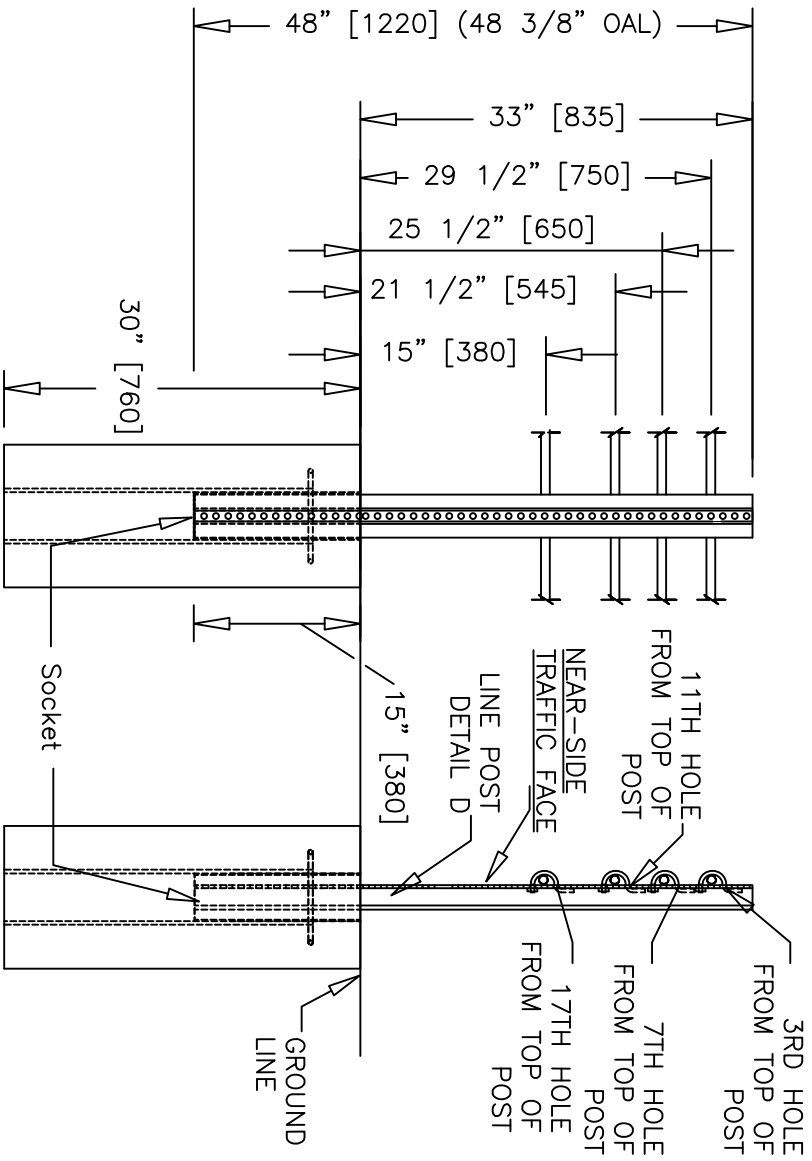
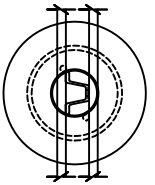


# LENGTH OF NEED POSTS MEDIAN CONFIGURATION

NOTE: CABLE HEIGHTS ARE TO THE MIDDLE OF THE CABLE.

## NU-CABLE™ - TL-3 FOUR CABLE SYSTEM

Revisions			Nucor Steel Marion Inc 912 Cheney Ave, Marion OH 43302				
No.	Date	By	CK.	Project No.	Date	Drawn By	Scale
1.	7/17/08	CH		400001	2008/03/06	AWC	
2.	7/28/09	CH		WITH CRP ANCHOR			
3.	10/1/09	CH					
4.	5/23/11	CH					
5.							



# LENGTH OF NEED POSTS ROADSIDE CONFIGURATION

NOTE: CABLE HEIGHTS ARE TO THE MIDDLE  
OF THE CABLE.

## NU-CABLE™ - TL-3 FOUR CABLE SYSTEM

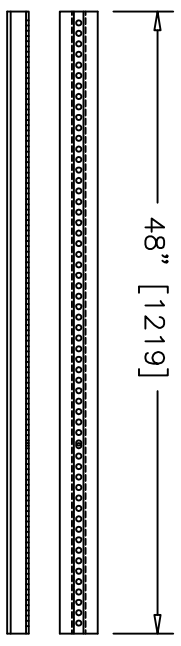
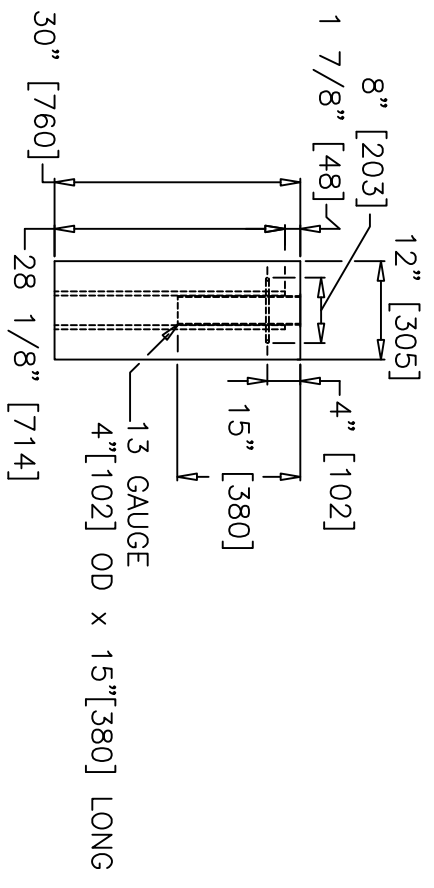
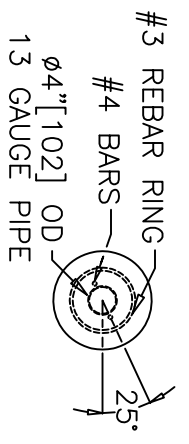
Revisions			Nucor Steel Marion Inc	
No.	Date	By	CK.	Project No.
1.	7/17/08	CH		912 Cheney Ave, Marion OH 43302
2.	7/28/09	CH		400001
3.	10/1/09	CH		2008/03/06
4.	5/23/11	CH		AWC
5.				WITH CRP ANCHOR

Sheet No.  
11 of 13



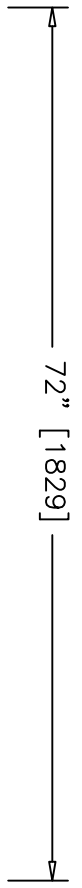
Footer shown with typical embedment depth of 2' 6" [762].

Refer to project plans for site specific footer requirements, per agency specifications and soil conditions.



DETAIL D

SOCKETED CHANNEL POST



DETAIL D2

DIRECT DRIVE POST OPTION

DETAIL C  
LINE POST FOOTING

NU-CABLE™ - TL-3 FOUR CABLE SYSTEM

Revisions			Nucor Steel Marion Inc				
No.	Date	By	CK.	Project No.	Date	Drawn By	Scale
1.	7/17/08	CH		400001	2008/03/06	AWC	
2.	7/28/09	CH		WITH CRP ANCHOR			
3.	10/1/09	CH					
4.	5/23/11	CH					
5.				Sheet No. 13 of 13			